



Lamont County Economic Development Resource Package

Table of Contents

Area Profile.....	PAGE 2
Heartland In Lamont County Map.....	PAGE 3
Available Property.....	PAGES 4-6
Key Industries.....	PAGES 7-8
Industrial Land Holdings Map.....	PAGE 9
Contact Information.....	PAGE 10

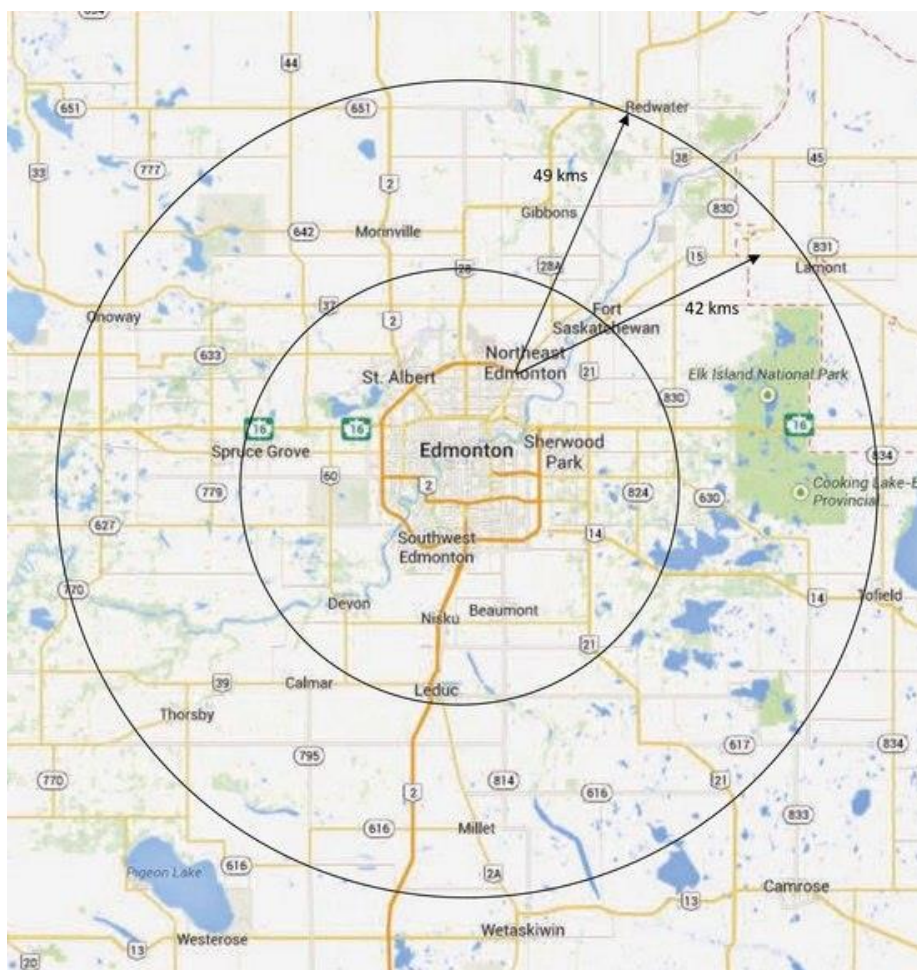
Area Profile

Lamont County offers a centrally located land base of heavy, medium and light industrial zones, and is actively encouraging both petro chemical and agricultural industrial development. As a partner in Alberta's Industrial Heartland, we are committed to provide a business climate and conditions for healthy and environmentally friendly, world-class economic development.

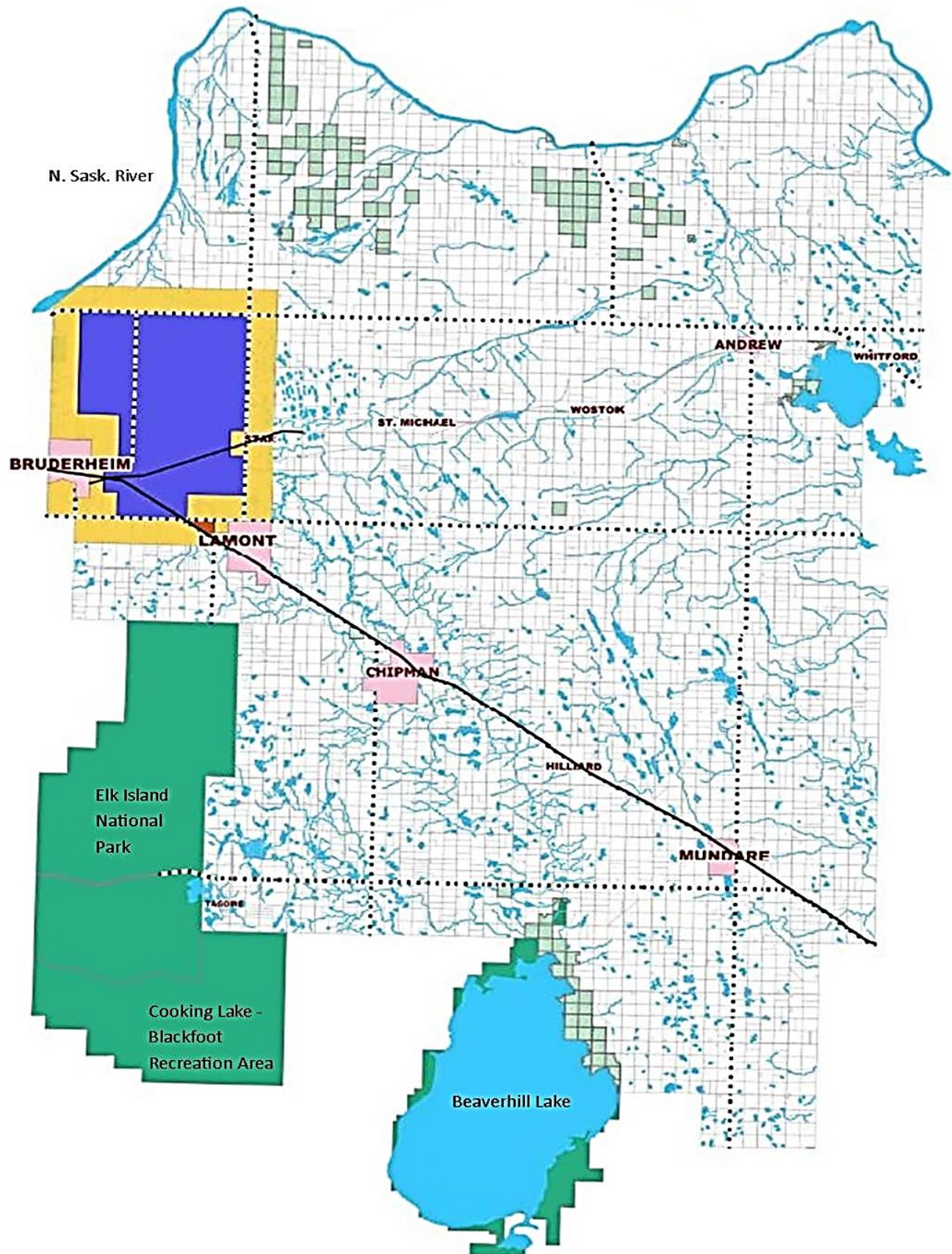
Land designated for industrial and commercial development is located in prime spots adjacent to Highway 15 and 45, 20 kms east of Fort Saskatchewan – a mere forty five minutes from Edmonton. In addition, there are a number of different sized land tracts available throughout the County on lower agricultural land. This land can be used for commercial and industrial uses on a discretionary basis with approval from the Municipal Planning Commission (MPC).

Lamont County is situated 40 minutes northeast of Edmonton, the capital of Alberta, and is within easy driving distance of key industrial locations including:

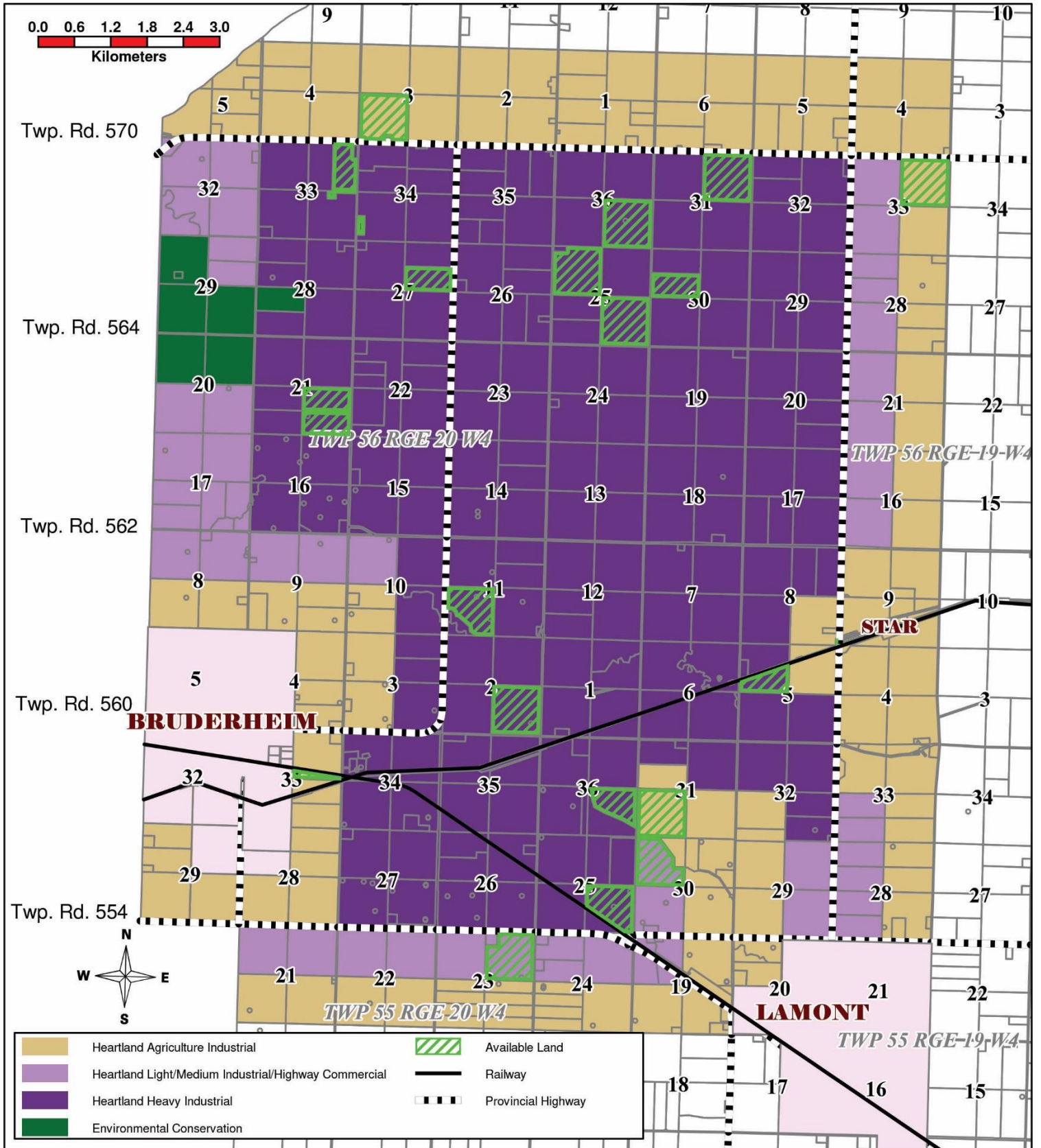
- Dow Chemical (22 kms – 16 minutes)
- Shell Scotford (17 kms – 11 minutes)
- Strathcona County (33 kms – 41 minutes)
- Sturgeon County (77 kms – 69 minutes)



Heartland in Lamont County Map



Available Property





SW-11-56-20-W4
132.32 acres, Zoned Heartland Heavy Industrial, Adjacent to Hwy 45



SW-31-55-19-W4
160 Acres, Zoned Agriculture Industrial Adjacent to RR 195, close to Hwy 15 & rail.



SW-3-57-20-W4
153.73 acres, Zoned Heartland Heavy Industrial, Adjacent to Hwy 38/45



SSE-21-56-20-W4
80 acres, Zoned Heartland Heavy Industrial, Adjacent to RR 203 and power



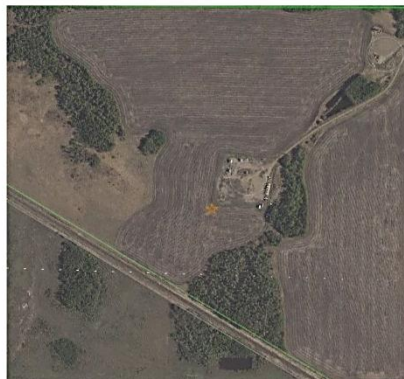
SNW-5-56-19-4
67.59 acres, Zoned Heartland Heavy Industrial, Directly adjacent to CP Rail



SNE-27-56-20-W4
78.72 acres, Zoned Heartland Heavy Industrial, Adjacent to Hwy 45



SE-36-56-20-W4
160 acres, Zoned Heartland Heavy Industrial, Adjacent to RR 200



SE-25-55-20-W4
124.5 acres, Zoned Heartland Heavy Industrial, Adjacent to CN & close to Hwy 15



NE-33-56-19-W4
156.45 acres, Zoned Heartland Agriculture Industrial, Adjacent to Hwy 45 and RR 193



SE-02-56-20-W4
157.75 acres, Zoned Heartland Heavy Industrial, Close to Hwy45 and CP Rail



NE-31-56-19-W4
157.5 acres, Zoned Heartland Heavy Industrial, Directly Adjacent to CP Rail



NSE-36-55-20-W4
90 acres, Zoned Heartland Heavy Industrial, Adjacent to RR 200 and close to Hwy 29



NE-23-55-20-W4

147.6 acres, Zoned Heartland Light/Medium Industrial/Highway Commercial, Adjacent to Hwy 15 and RR 201, close to CN Rail



NSE-21-56-20-W4

80 acres, Zoned Heartland Heavy Industrial, Adjacent to RR 203



NE-33-55-20-W4

22.16 acres, Zoned Heartland Agriculture Industrial, Accessible from Highway 45



SE-25-56-20-4

160 acres, Zoned Heartland Heavy Industrial, Adjacent to Twp Rd. 556 and RR 200



ENE-33-56-20-W4

75.95 acres, Zoned Heartland Heavy Industrial, Adjacent to Hwy 38 and RR 203



SE-33-56-20-W4

6.97 acres, Zoned Heartland Heavy Industrial, Close to Hwy 38, Adjacent to RR 203



NW-30-55-19-W4

128.15 acres, Zoned Heartland Land/Medium Industrial/Highway Commercial, Adjacent to RR 200, close to Hwy 29 & CN Rail



JFSL Site and Buildings (NW-26-55-20-W4)
±37,000 Sq. Ft. On ±76.78 Acres, Zoned Heartland Heavy Industrial



SW-34-56-20-W4

9.96 acres, Zoned Heartland Heavy Industrial, Adjacent to RR 203, close to Hwy 45



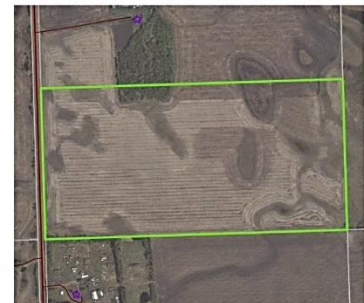
NW-25-56-20-W4

156.76 acres, Zoned Heartland Heavy Industrial, Adjacent to RR 201



SE-8-56-19-W4

1.16 acres, Zoned Heartland Agriculture Industrial, Adjacent to Hwy 831 and CP Rail



SNW-30-56-19-W4

80 acres, Zoned Heartland Heavy Industrial, Adjacent to RR 200

Key Industries

Lamont County is a Key Sector of Alberta's Industrial Heartland. We have put together a comprehensive list of industrial contacts. Feel free to visit their websites to get more information.

Oil and Gas

Cenovus Energy Inc. (Bruderheim Energy Terminal): Cenovus Energy Inc. is a Canadian integrated oil company. Operations include oil sands projects in northern Alberta and established natural gas and oil production in Alberta and Saskatchewan. The Bruderheim Energy Terminal is part of their strategy to create additional transportation options for their products and is designed to help capture global prices for their oil.

Inter Pipeline Fund: Inter Pipeline is a major petroleum transportation, storage and natural gas liquids processing business based in Calgary, Alberta, Canada. They own and operate four business segments operating in western Canada and Europe. Their pipeline systems span over 7,800 kilometres in length and transport approximately 1.4 million barrels per day (b/d).

Graymont: Graymont is a family-owned company focused on high calcium and dolomitic lime, and an emerging global leader in the supply of lime and limestone products. Graymont serves major markets throughout the United States and Canada and has extended its reach into the Asia-Pacific region.

Meg Energy: MEG Energy Corp. is a Canadian oil sands company focused on sustainable in situ development and production in the southern Athabasca oil sands region of Alberta. MEG has acquired a large, high-quality resource base. With these resources and a well-formulated strategic growth plan, MEG is positioned to be a strong oil sands player for many years to come.

Service Industries

Alberta Midland Railway Terminal Ltd. Alberta Midland Railway Terminal (AMRT) is a rail logistics centre strategically located in Alberta's Industrial Heartland. They provide third party rail logistics services to world-class energy and agricultural customers. The terminal is located west of the Town of Lamont and off CN's Secondary Mainline between Edmonton and Winnipeg. AMRT offers scheduled switching, and consistent local CN service. The terminal is designed for the efficient exchange of traffic between CN and AMRT.

AltaLink Ltd.: AltaLink is Alberta's largest regulated electricity transmission company. Their transmission system is the essential link that connects homes, farms, businesses and industries to the electricity generated across Alberta. One of their power stations resides in Lamont County.

W-K Trucking: W-K Trucking Inc. has been oilfield hauling since 1985. Their fleet consists of both sealed and regular tanks, so they can move all types of fluid; sweet and sour. They also haul condensate with either tandem, trailer or Super B, and have a designated fresh water truck and mud truck.

Helical Pier Systems: Formerly Peace Land Pilings, Helical Pier Systems offers engineering, manufacturing, installation, distribution and equipment design and creation for helical piling products. They offer a full range of piling solutions and services that produce desired results in highly challenging environments.

Western Asphalt: Western Asphalt is a family owned and operated business with roots going back to 1946. They are a supplier of anionic, cationic emulsified asphalts used in the process of recycling existing roadways and also preventative road maintenance. With Emulsion Terminals strategically located in Brandon, Manitoba and Bruderheim Alberta they are able to supply all of Western Canada's emulsion needs.

Sil Industrial Minerals: Sil Industrial Minerals is western Canada's leader in industrial sands, blasting abrasives and equipment. Sil's processing facility north of Bruderheim, Alberta, has been in operation for over 35 years.

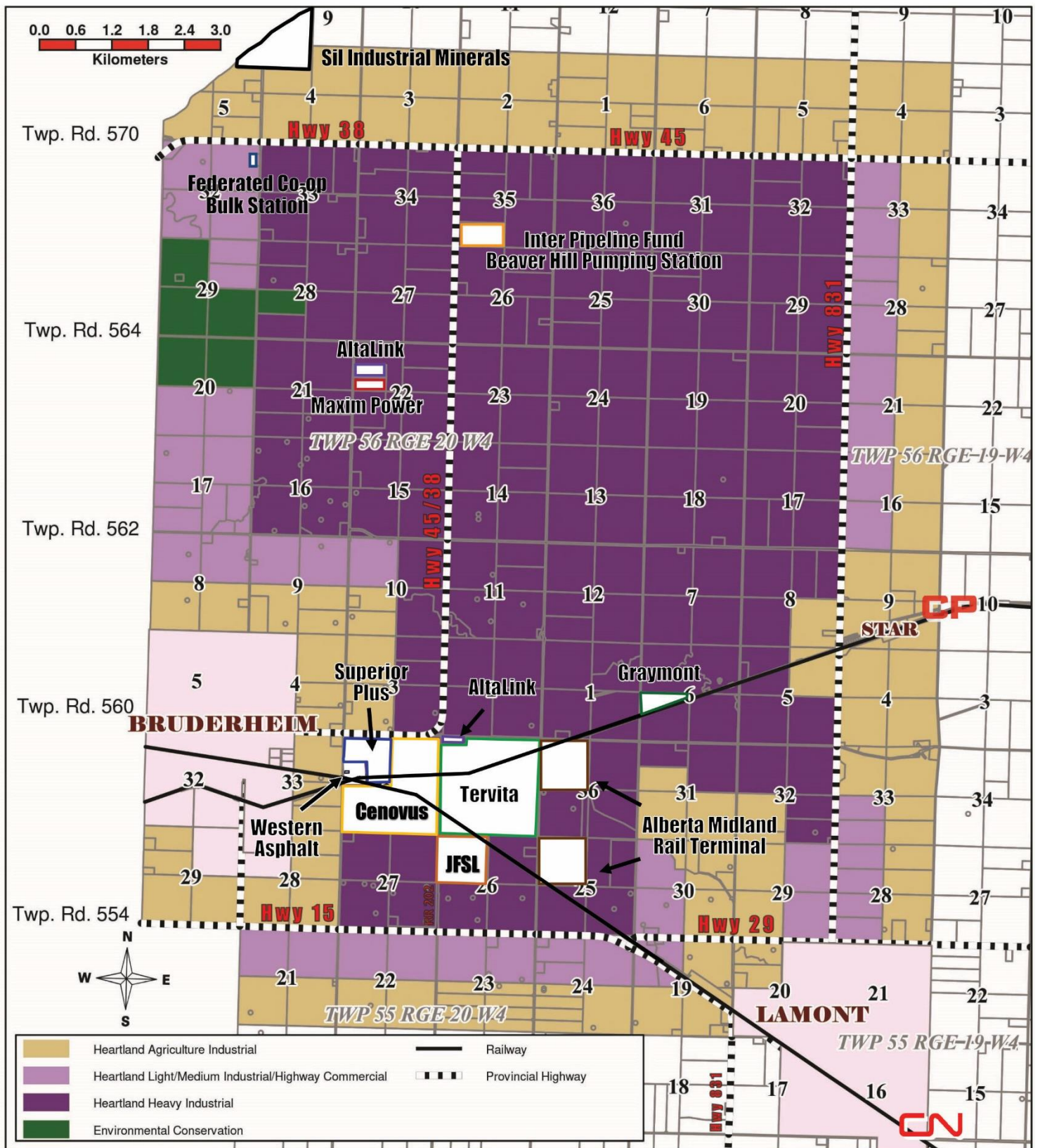
Agriculture

NBI Feedyards: Nilsson Bros. Inc. (NBI) is a group of privately-owned, livestock-based agricultural businesses located throughout Western Canada. Nilsson Bros. owns and operates a diverse group of agri-business ventures including food-processing facilities, auction markets, livestock feeder buying services, satellite auction sales, livestock commodity trading, livestock financing, farm & ranch insurance, and cow/calf ranches.

Richardson Pioneer: Richardson Pioneer has the most efficient network of high throughput Ag Business Centres in Western Canada, with over 100 years of experience in the agriculture industry. Richardson International is Canada's largest agribusiness and is recognized as a global leader in agriculture and food processing.

Viterra: Viterra's grain elevators and special crops facilities are strategically located in the heart of the growing region on Canada's Prairies and parts of the northern US. Through its grain elevators, Viterra stores, ships, cleans, and blends grains and oilseeds to ensure consistent quality that meets end-user specifications.

Industrial Land Holdings Map



Contact Information

For more information about development opportunities in Lamont County, or Lamont County in general, contact:

Shane Olson

Economic Development Officer

Email: shane.o@lamontcounty.ca

Phone: 780-895-2233 ext. 216